

# SOMERSET

SQ FT 3,400    BEDS 4    BATHS 4    STORIES 2    3 Car Garage

SLAB BASE PRICE: \$768,000



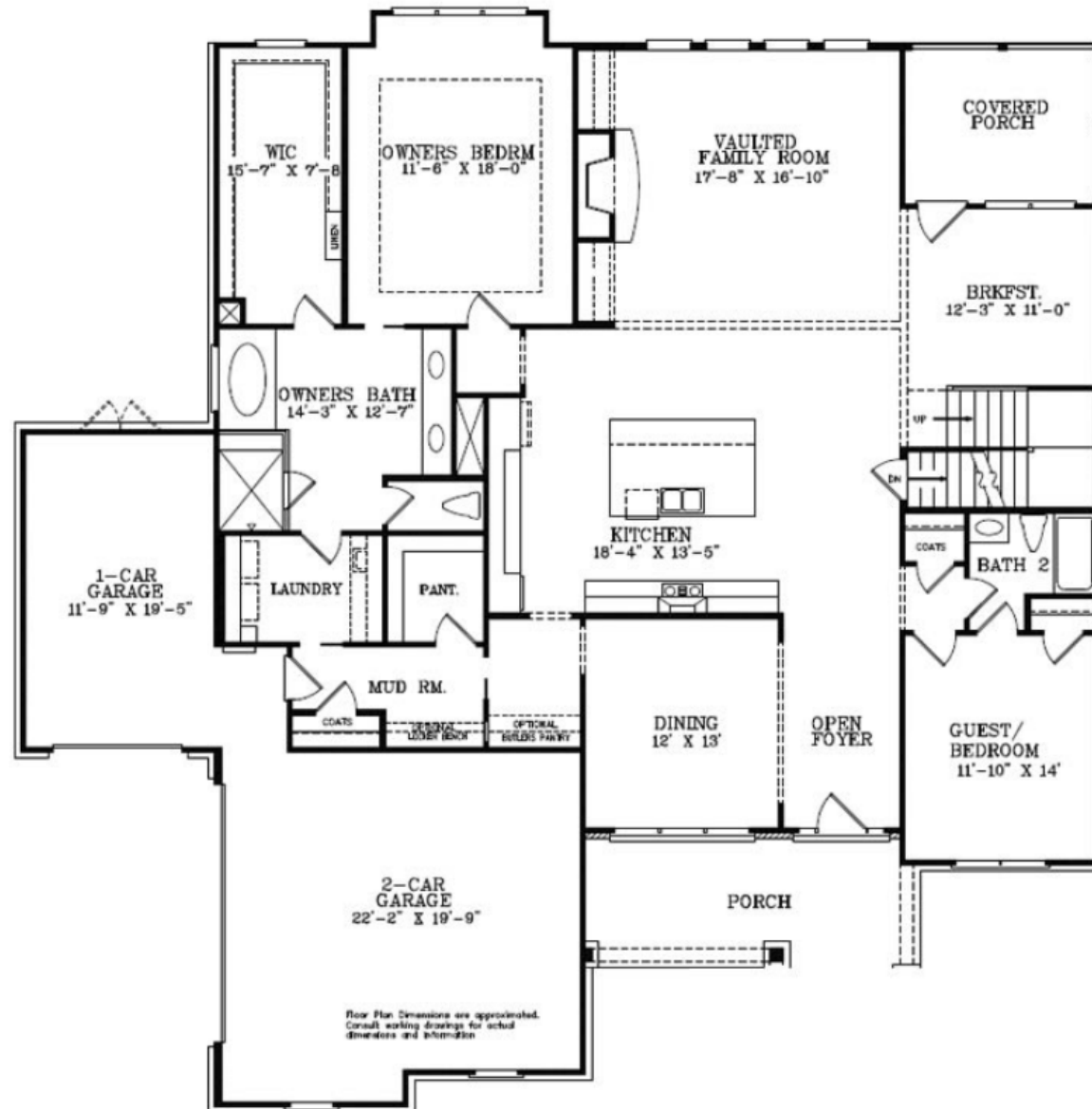
*Artistic rendering of plan elevation. Actual plan may vary slightly.*

PRICES SUBJECT TO CHANGE WITHOUT NOTICE AND AT BUILDERS DISCRETION

# SOMERSET

SQ FT 3,400    BEDS 4    BATHS 4    STORIES 2    3 Car Garage

SLAB BASE PRICE: \$768,000

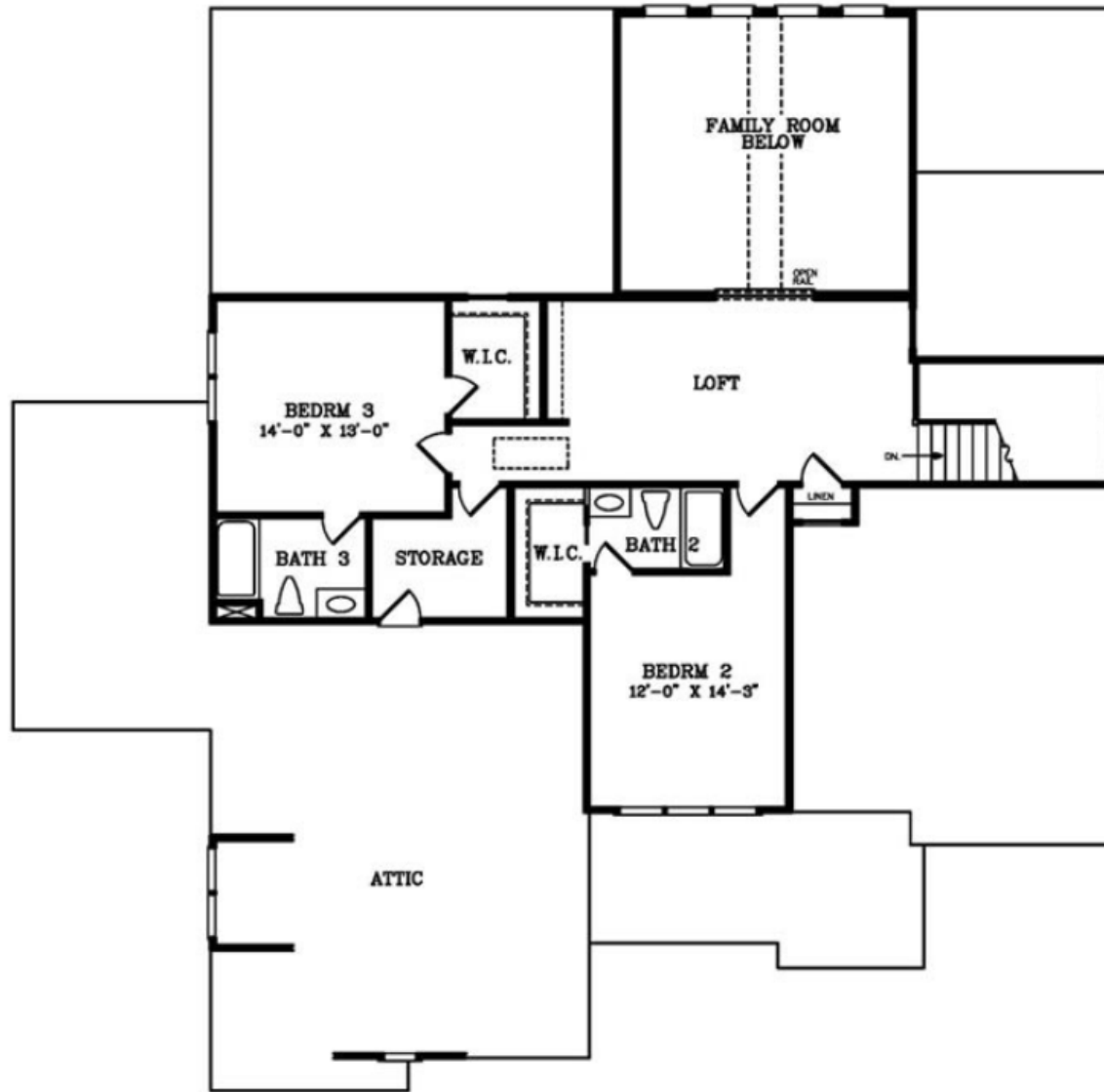


PRICES SUBJECT TO CHANGE WITHOUT NOTICE AND AT BUILDERS DISCRETION

# SOMERSET

SQ FT 3,400    BEDS 4    BATHS 4    STORIES 2    3 Car Garage

SLAB BASE PRICE: \$768,000



PRICES SUBJECT TO CHANGE WITHOUT NOTICE AND AT BUILDERS DISCRETION