



## The Melrose Plan

### 1-4 Bedrooms | 1.5-3 Bathrooms

10' Smooth Ceilings on First Level

5" Crown Molding

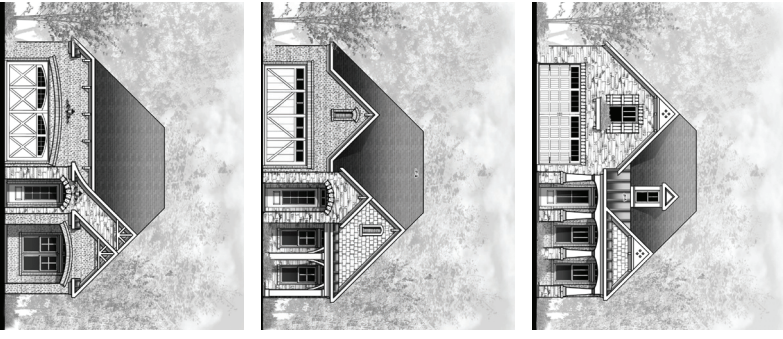
Multiple Options on the Main Level  
and Terrace Level

Front Entry Garage

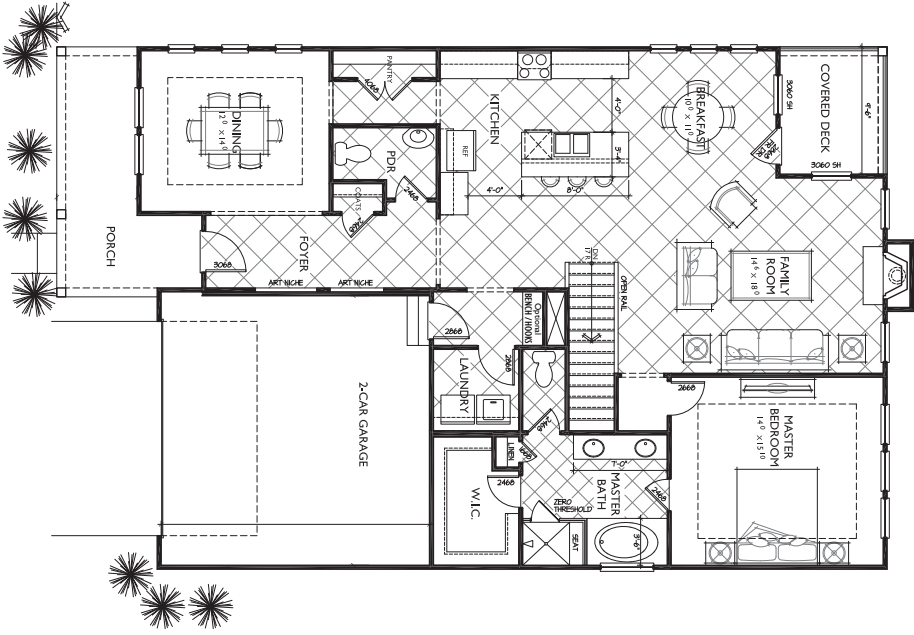
Square Feet: 1623-2898

The Melrose plan features a double-entry front access garage coupled with refined old-English design. With options for up to 4 bedrooms and 3 baths, or a dining room/study it offers flexibility in use. The master on the main, spacious family room and a covered deck are sought after living areas. The gourmet kitchen option continues the theme of styling and grace found in TreeTop Residential's fine design in homebuilding.

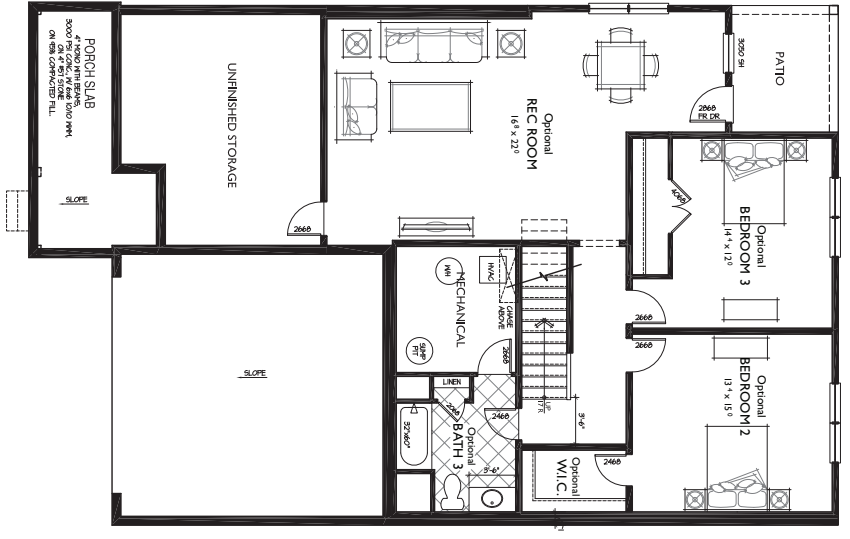
# Façades



# 1st Floor



# Basement



# 1st floor options

