



## The Dunrobin Plan

### 3 Bedrooms | 2 Bathrooms

10' Smooth Ceilings on First Level

5" Crown Molding

Multiple Options on the Main Level and

Terrace Levels

Front Entry Garage

Square Feet: 1851

The Dunrobin plan features 3 bedrooms and 2 baths all on the main level with many customizable options available. This plan has a morning room which could become a sitting room for the master bedroom. The double entry front access garage also allows this home to be built on a basement lot. A spacious family room and dining area continue the theme of styling and grace found in Treetop Residential's fine design in home building.

5790 Holly Springs Parkway, Woodstock, GA 30188 | 770-592-2404 | [TreetopResidential.com](http://TreetopResidential.com)

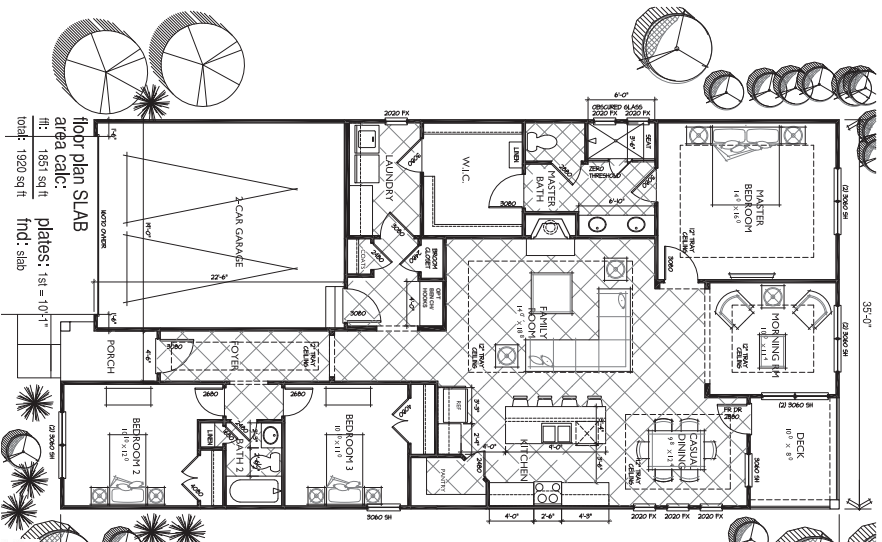




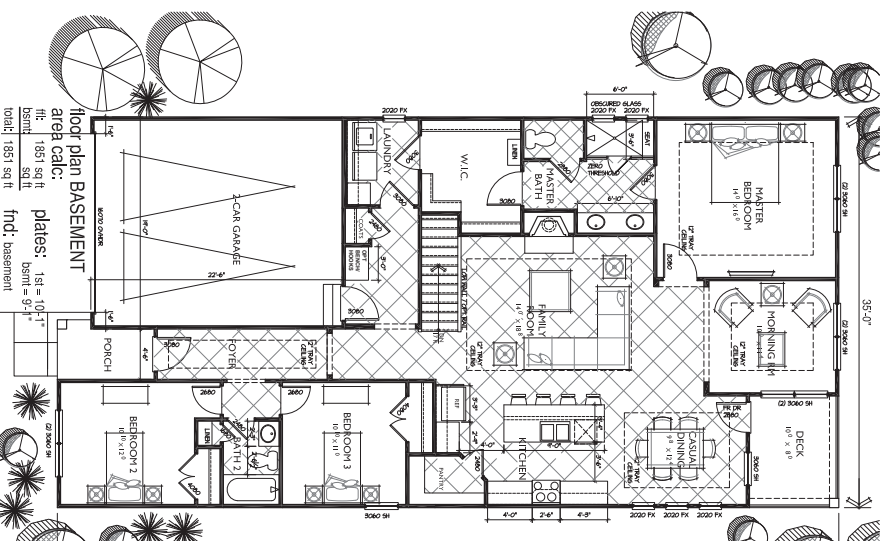
# Façades



# 1st Floor



# Optional 1st Floor on Basement



# 1st floor options

