

## The Lyndhurst Plan

### 2–5 Bedrooms | 2–4 Bathrooms

Porte Cochère Design Gives  
 Large Courtyard Area  
 10' Smooth Ceilings on First Level  
 5" Crown Molding  
 Designer Kitchen  
 Master on Main  
 Multiple Upstairs Options  
 Front Entry Garage  
 Rear Patio Option  
 Square Feet: 2069–3261

With up to 3,200 square feet of livable space, the Lyndhurst is the most spacious of all the TreeTop Residential home designs. Though somewhat modest in its modified exterior façade, its porte cochère design (which offers the added bonus of an expansive courtyard area) and its multiple upstairs bedroom and bath options, combine to make this design the most versatile (and livable) of all of TreeTop Residential's designs. It also includes a front-entry garage as well as a rear patio option.

5790 Holly Springs Parkway, Woodstock, GA 30188 | 770-592-2404 | [TreetopResidential.com](http://TreetopResidential.com)

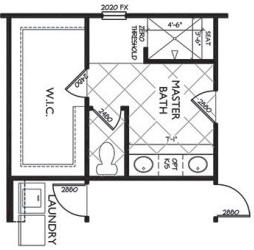


Floor plans are the property of Treetop Residential and are protected by US. copyright laws. Prices, incentives, promotions, features, options, amenities, floor plans, elevations, designs, materials, and dimensions are subject to change without notice. Square footage and dimensions are estimated and may vary in actual construction. Floor plans, interiors and elevations are artist's conception or model renderings and are not intended to show specific detailing.

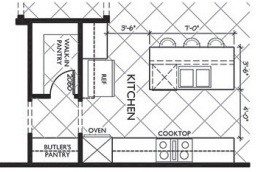


# 1st Floor

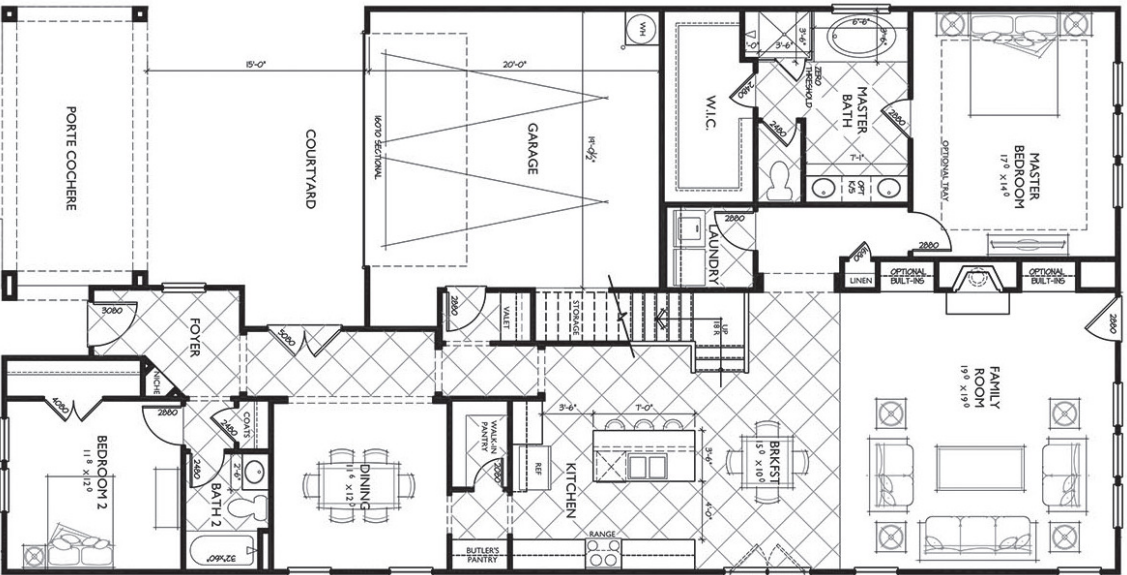
## Options



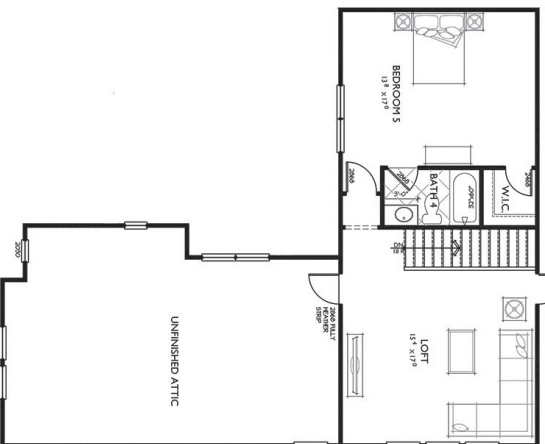
opt. m. bath



opt. gourmet kitchen



# 2nd Floor Options



## Facades

