



## The Inverness Plan

**2-5 Bedrooms | 2-4 Bathrooms**

10' Smooth Ceilings on First Level

5" Crown Molding

Gourmet Kitchen Option

Master on Main

Front Entry Garage

Square Feet: 1981-3032

The Inverness plan features a double-entry front access garage coupled with the old English design and quaint walk-up front door, provide a cozy and warm aesthetic alternative option for homebuyers. With options for up to 3 bedrooms and 2 baths upstairs, and flex room, master suite and family rooms downstairs, the Inverness offers a somewhat modified version of the TreeTop Residential fine design in homebuilding.

5790 Holly Springs Parkway, Woodstock, GA 30188 | 770-592-2404 | [TreetopResidential.com](http://TreetopResidential.com)

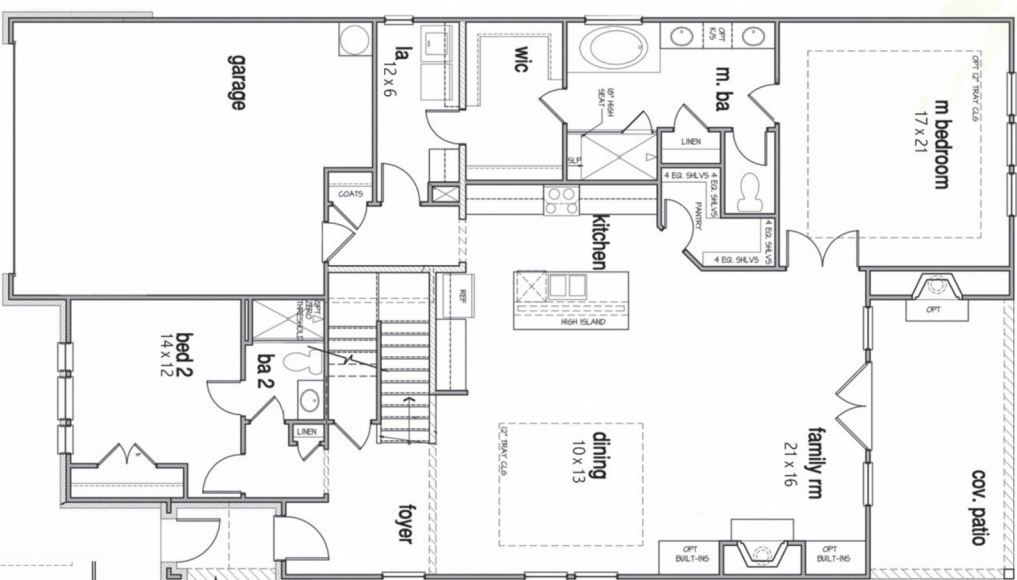


Floor plans are the property of Treetop Residential and are protected by US. copyright laws. Prices, incentives, promotions, features, options, amenities, floor plans, elevations, designs, materials, and dimensions are subject to change without notice. Square footage and dimensions are estimated and may vary in actual construction. Floor plans, interiors and elevations are artist's conception or model renderings and are not intended to show specific detailing.

# Facades



# 1st Floor



# 2nd Floor Options



# 1st Floor Options

