



The Claire Plan

2-4 Bedrooms | 2-3 Bathrooms

10' Smooth Ceilings on First Level

5" Crown Molding

Gourmet Kitchen Option

Master on Main

Rear Entry Garage

Large Great Room

Square Feet: 1957-2807

With its chic, old-English façade, the Claire plan continues the two-story designs made notable by TreeTop Residential. An optional loft and up to 2 bedrooms and 1 full bath upstairs, or the optional bonus of a separate master suite upstairs, combine to make this design a favorite of many buyers.

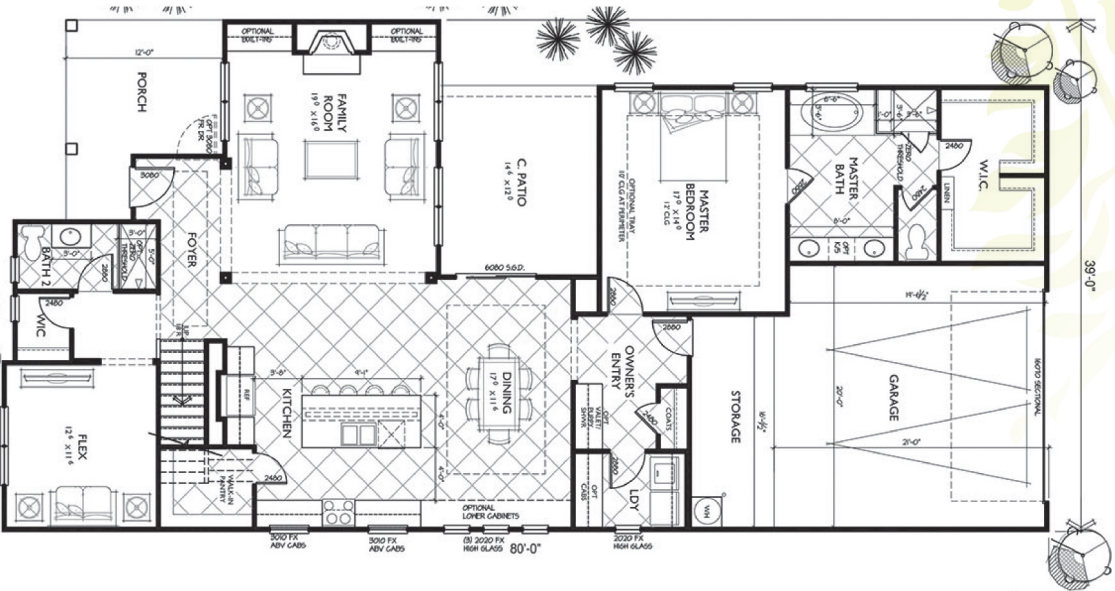
The Claire continues the TreeTop Residential traditions of the rear-entry garage and optional gourmet kitchen with its large designer kitchen island. A separate flex room and over-sized great room round out the features in this design.

5790 Holly Springs Parkway, Woodstock, GA 30188 | 770-592-2404 | TreetopResidential.com

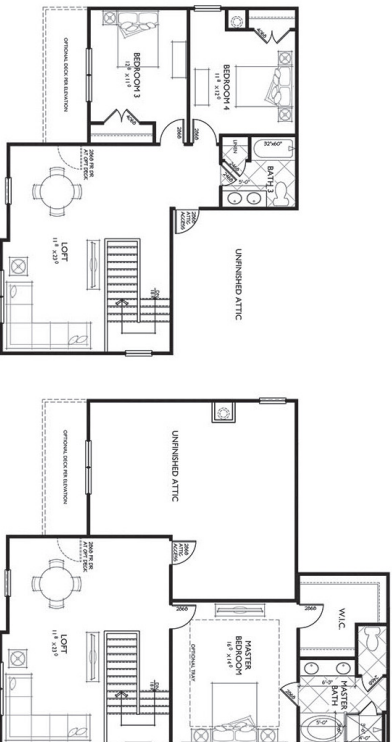
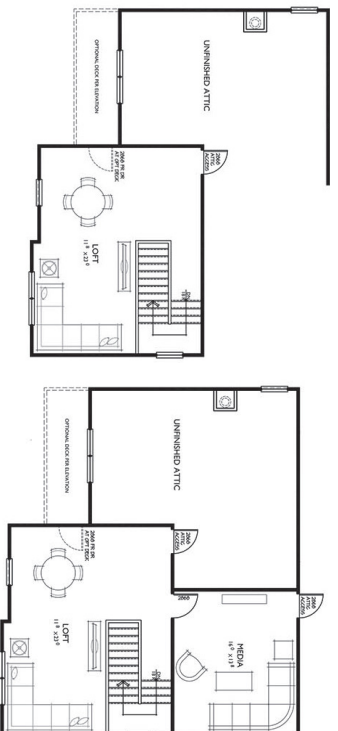


Floor plans are the property of Treetop Residential and are protected by US. copyright laws. Prices, incentives, promotions, features, options, amenities, floor plans, elevations, designs, materials, and dimensions are subject to change without notice. Square footage and dimensions are estimated and may vary in actual construction. Floor plans, interiors and elevations are artist's conception or model renderings and are not intended to show specific detailing.

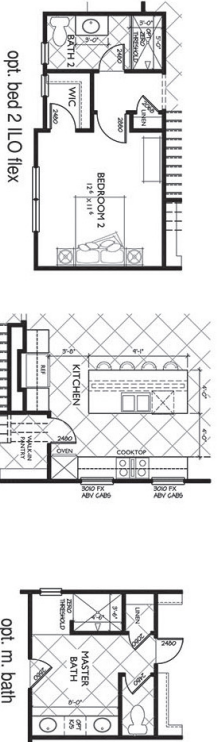
1st Floor



2nd Floor Options



1st Floor Options



Façades

